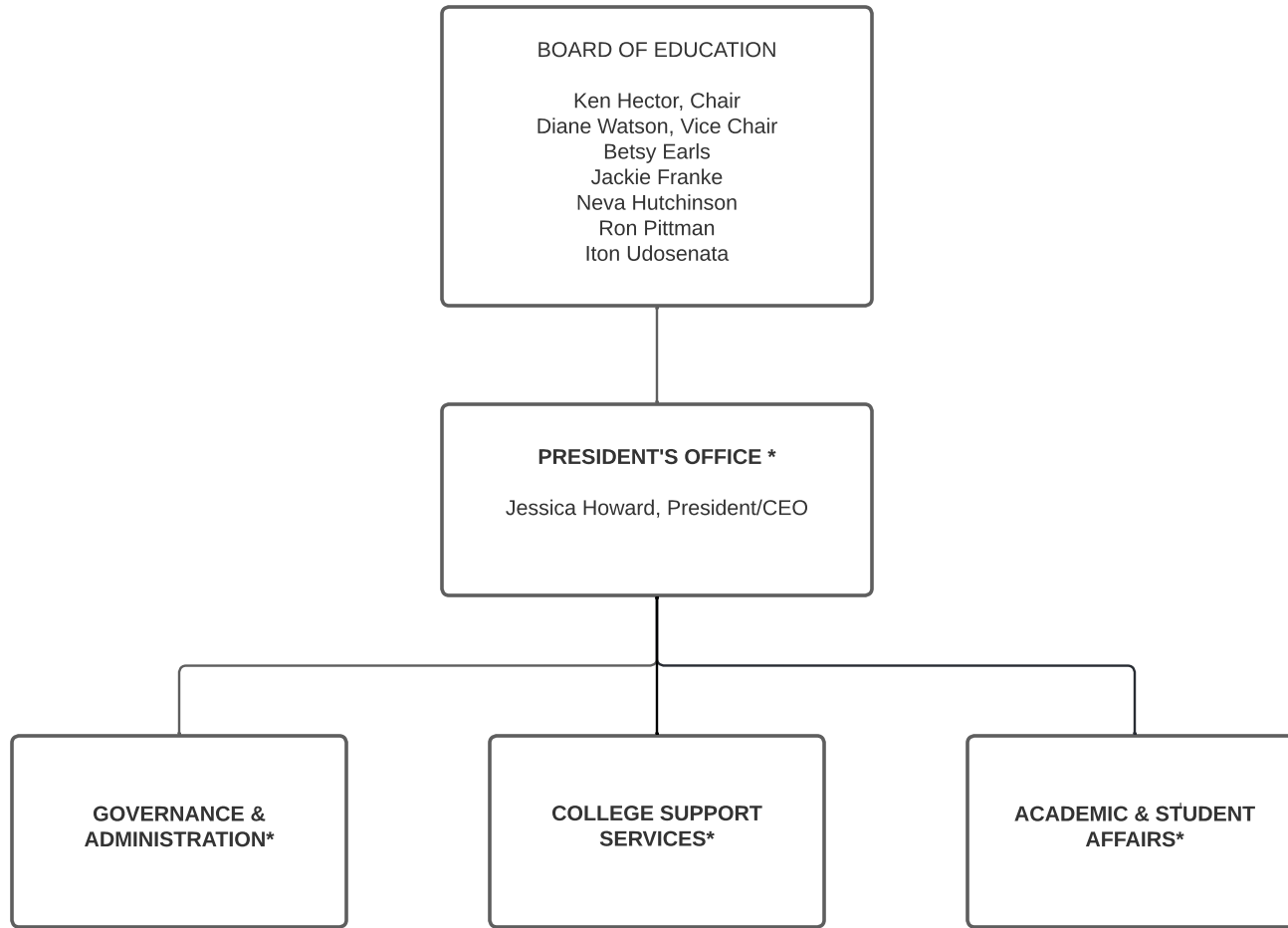
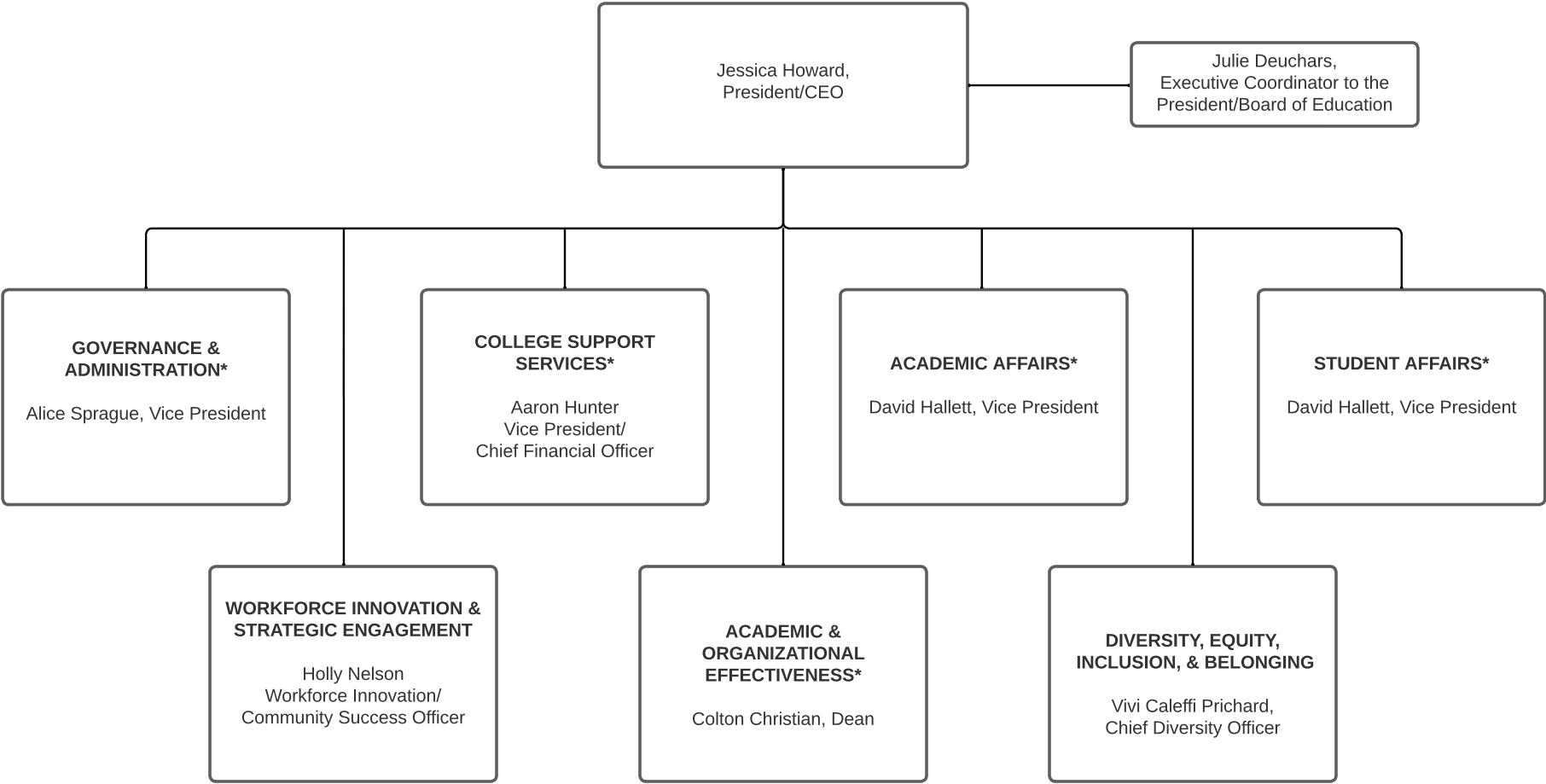


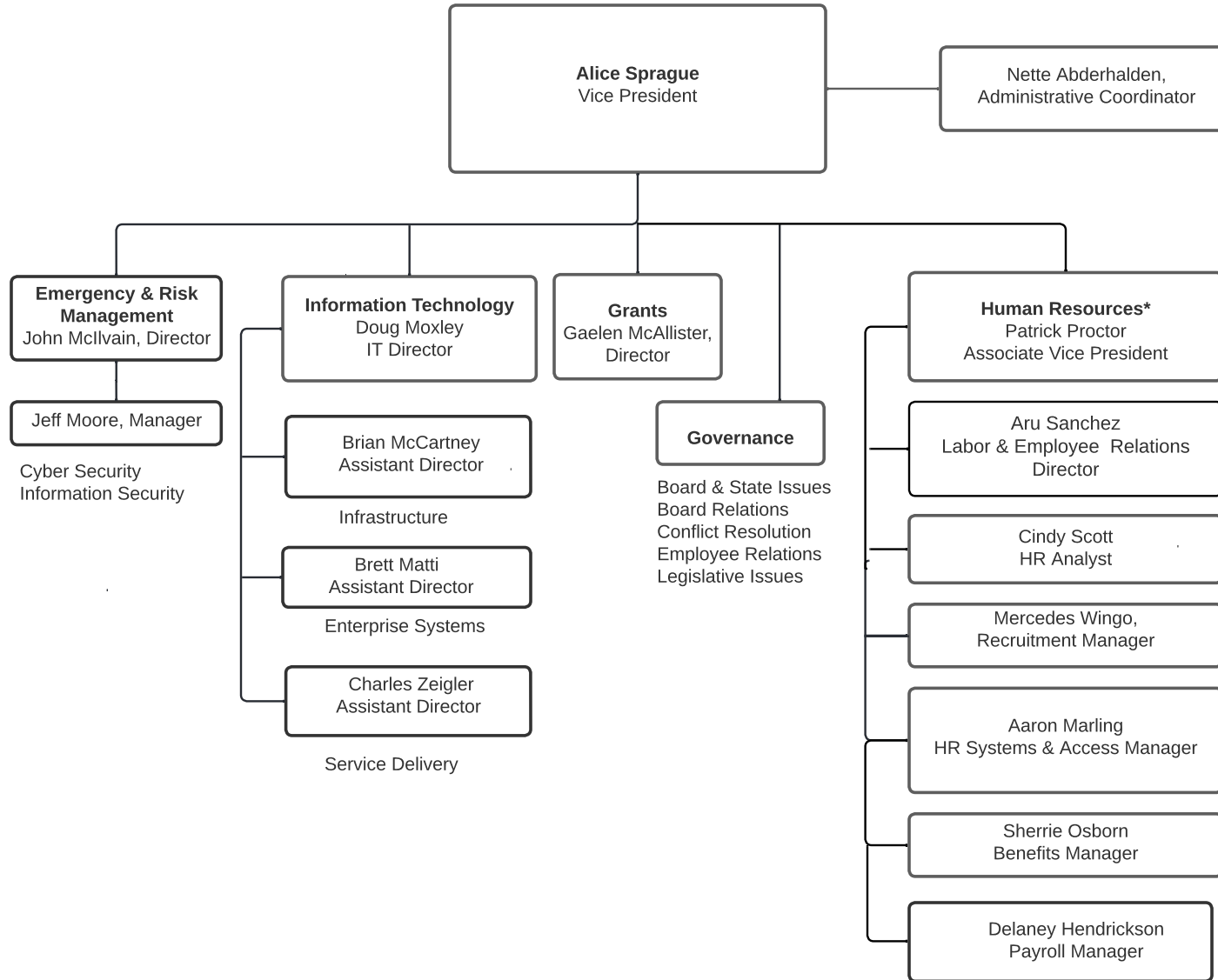
CHEMEKETA COMMUNITY COLLEGE



PRESIDENT'S OFFICE

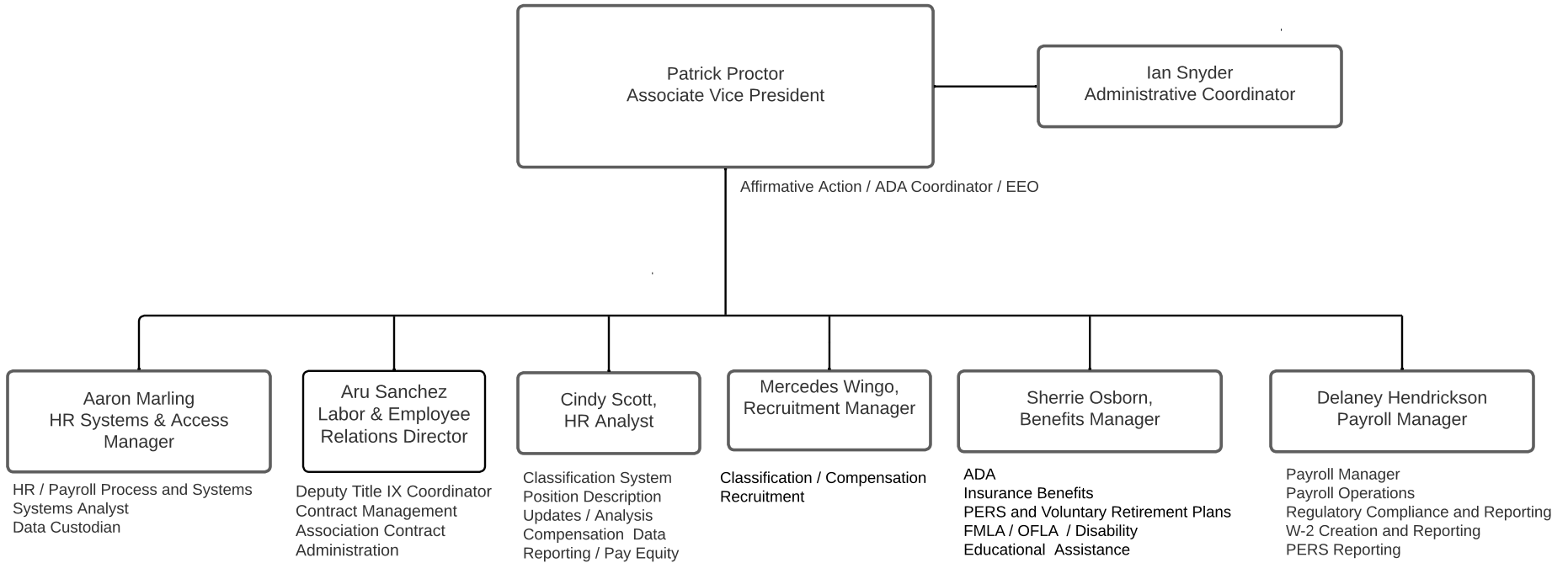


GOVERNANCE & ADMINISTRATION



*more detailed charts follow

HUMAN RESOURCES



COLLEGE SUPPORT SERVICES

Aaron Hunter,
Vice President / Chief Financial Officer

Ian Snyder,
Administrative Coordinator

Capital Projects & Facilities
Rory Alvarez, Director
Elizabeth Carlson, Dept.
Specialist

Capital Projects/Facilities Planning
Facilities & Maintenance
Development
Sustainability
Transportation

Budget and Finance
Brian Knowles, Director
Allison Stewart Hull, Management
Analyst

Budget & Position Control
Cash Management
College Infrastructure
Financial Analysis
Investments

Real Estate Services
Tom Howard, Manager

Bookstore & Auxiliary Services
Amanda Faltyn, Director

Bookstore

Auxiliary Services
Stephanie Arritola, Supervisor

Copy Center
Mail Services
Shipping & Receiving

Business Services
Rich Kline, Director

Accounting & Audit
Accounts Receivable
Procurement Services

Cashiering
Michele Hill,
Supervisor

Cashiering
Student Accounts
Enrollment Center Co-Coordination

**Grant Accounting &
Accounts Payable**
Kela Kruse, Manager

Accounts Payable
Grant Accounting
Procurement Care
Administration

Institutional Advancement
Marie Hulett, Executive Director
Esthela Zendejas, Alumni &
Community Event Coordinator

Foundation
Marketing
Public Relations

Foundation
Jamie Wenigmann,
Development Director

Event & Food Services
Elizabeth Facanha, Coordinator

James Berndt, Manager

Custodial Services

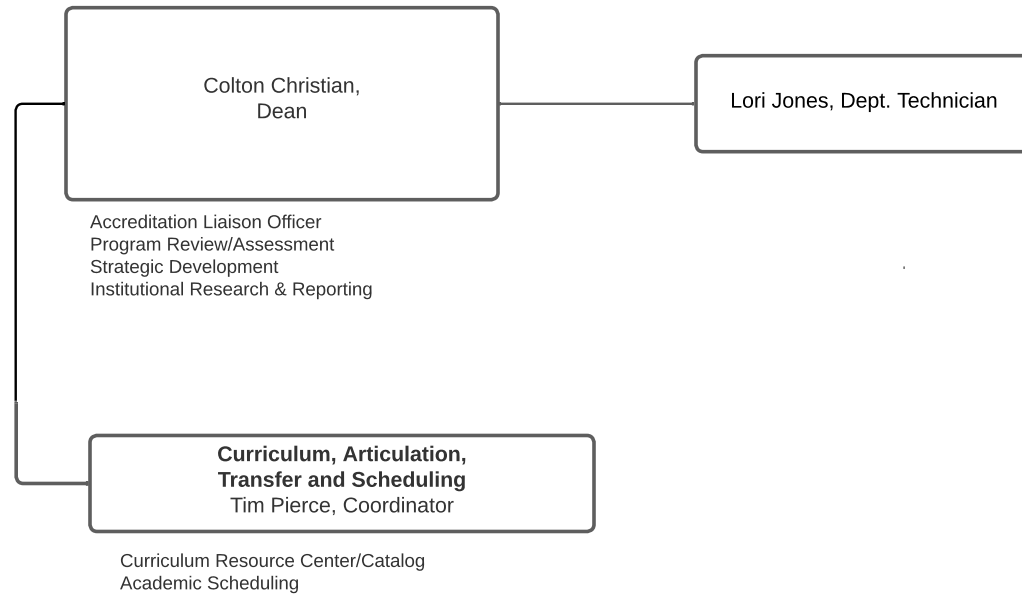
Dee Dixon, Manager

Grounds

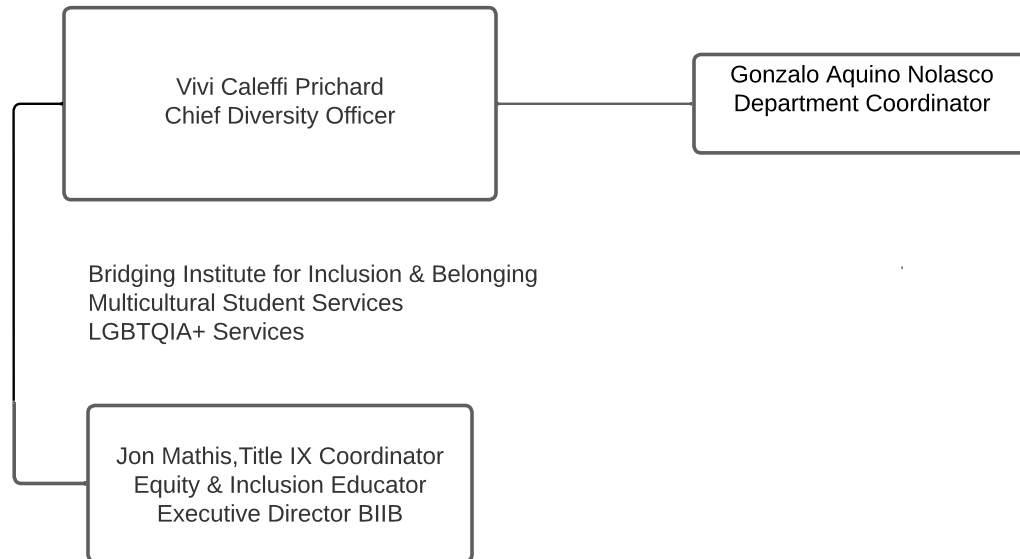
Isaac Talley, Manager

Construction Project Management
Plans & Archiving

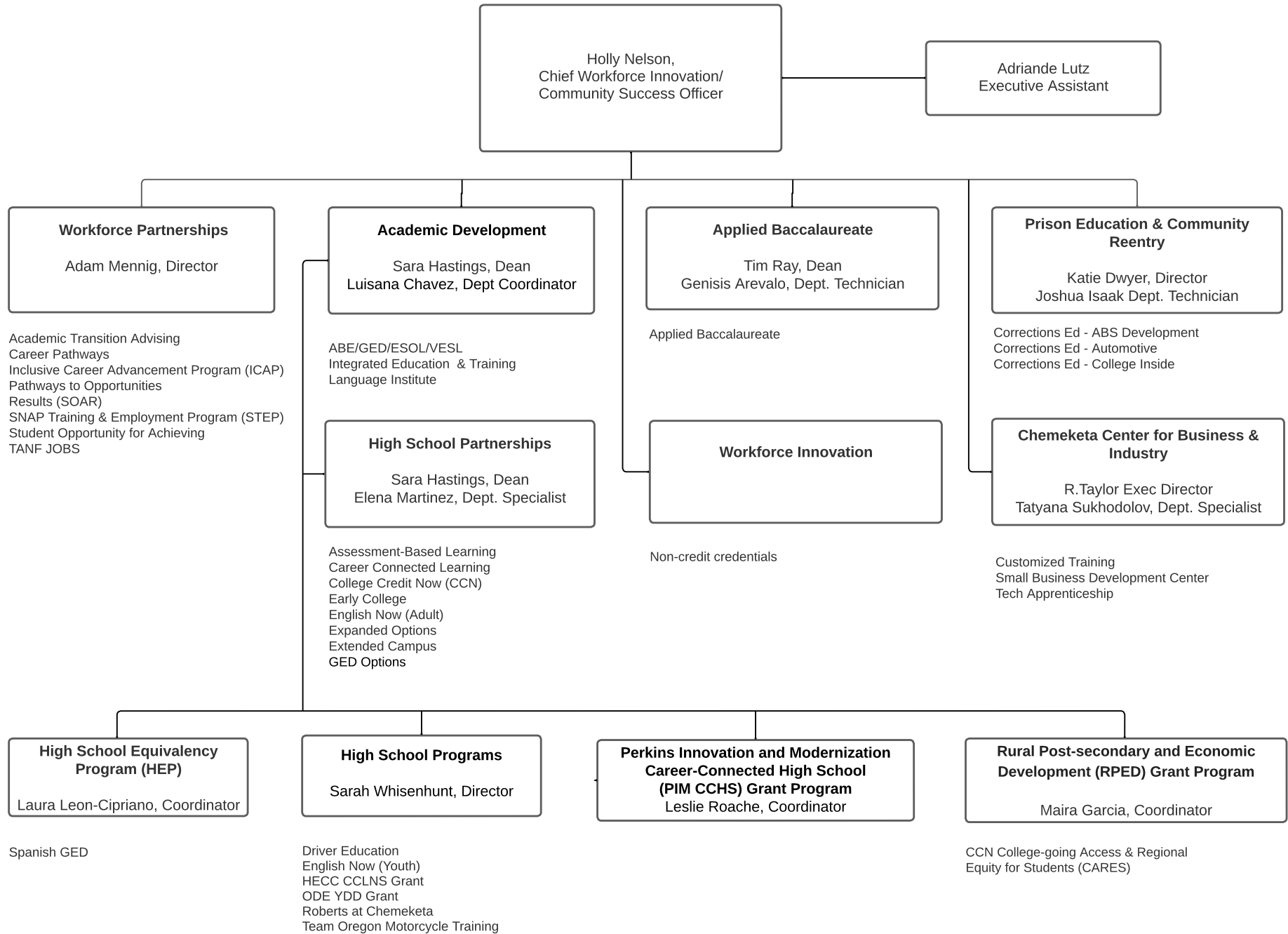
ACADEMIC & ORGANIZATIONAL EFFECTIVENESS



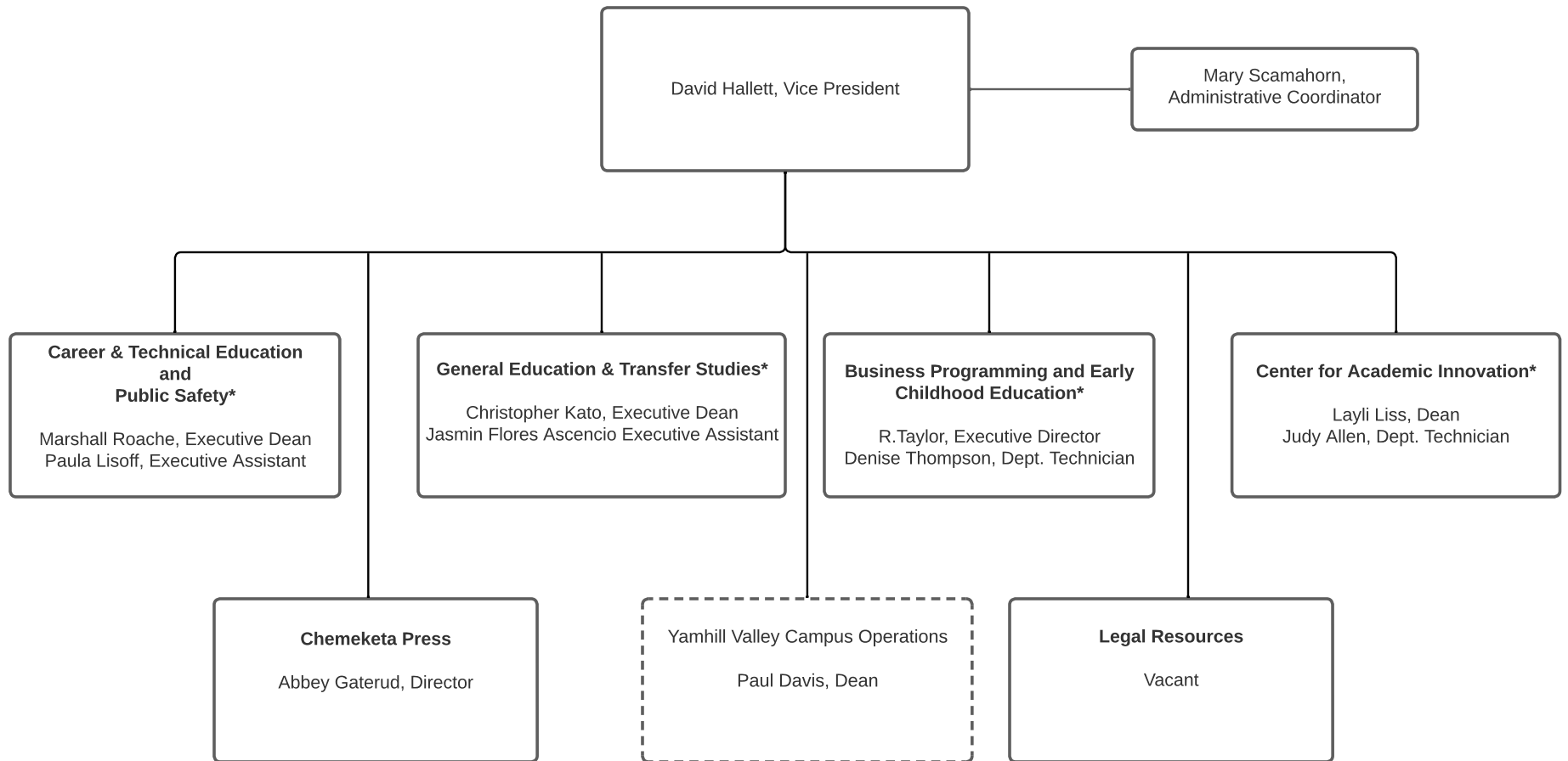
DIVERSITY, EQUITY, INCLUSION, & BELONGING



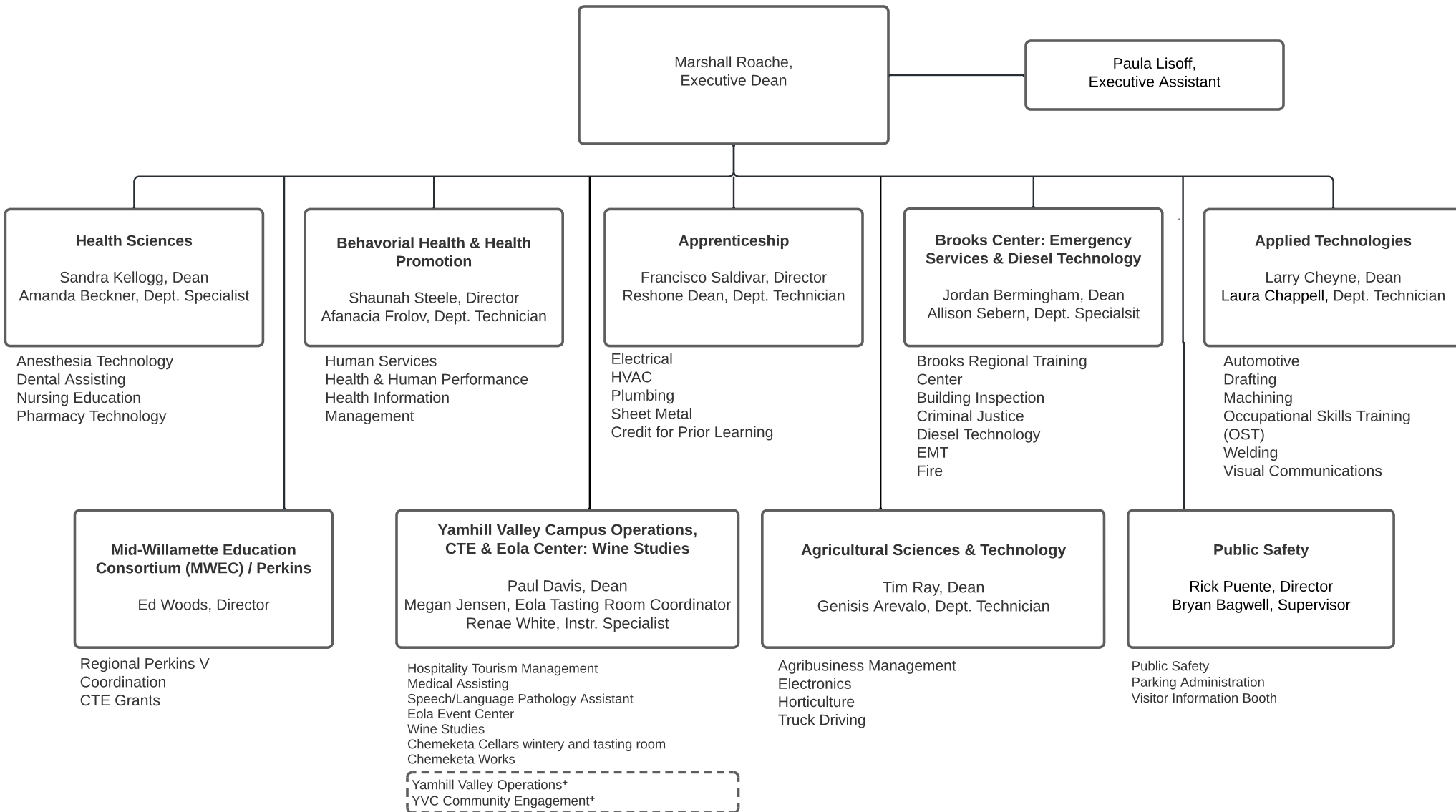
Workforce Innovation & Strategic Engagement



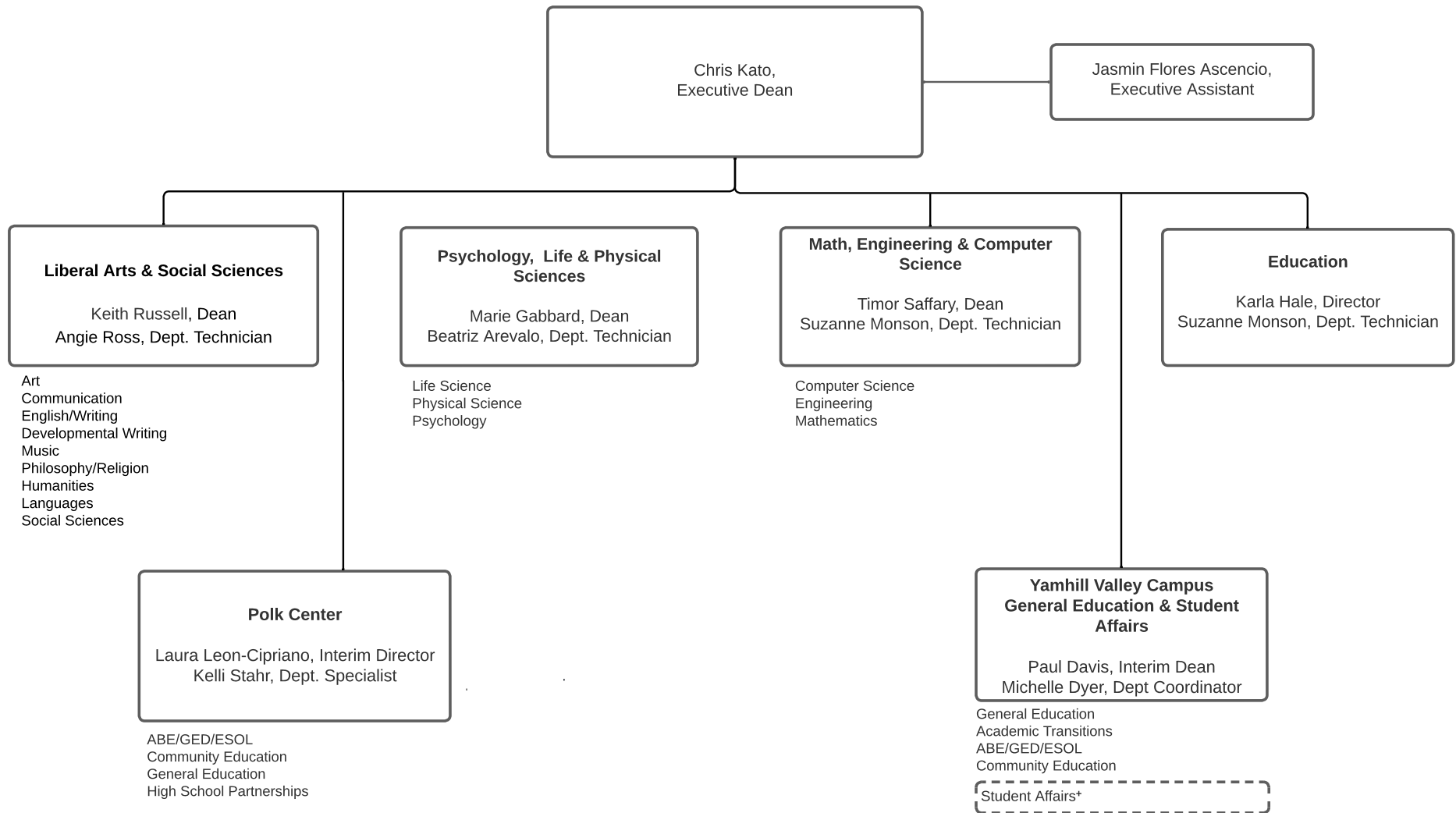
ACADEMIC AFFAIRS



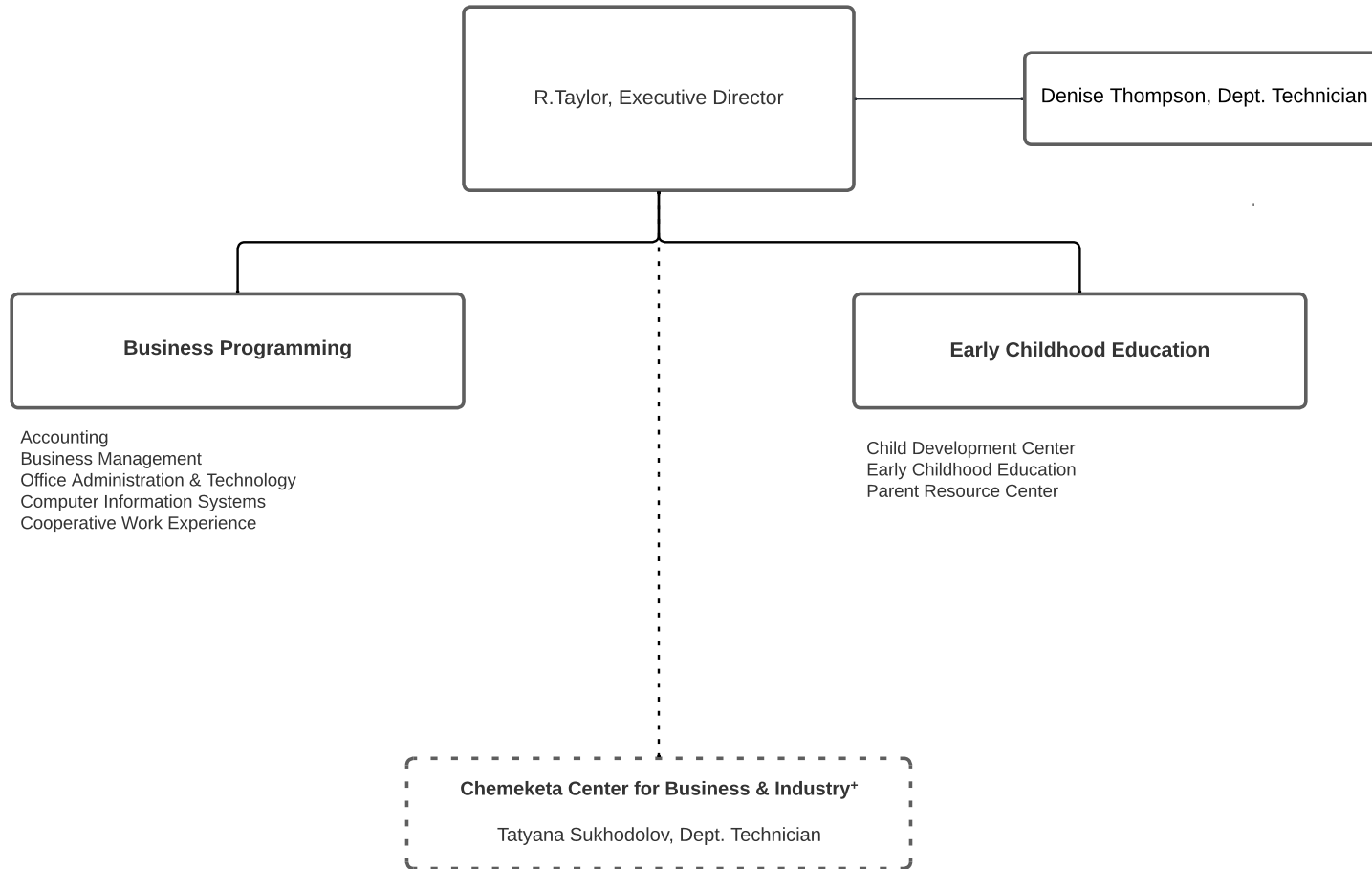
CAREER & TECHNICAL EDUCATION AND PUBLIC SAFETY



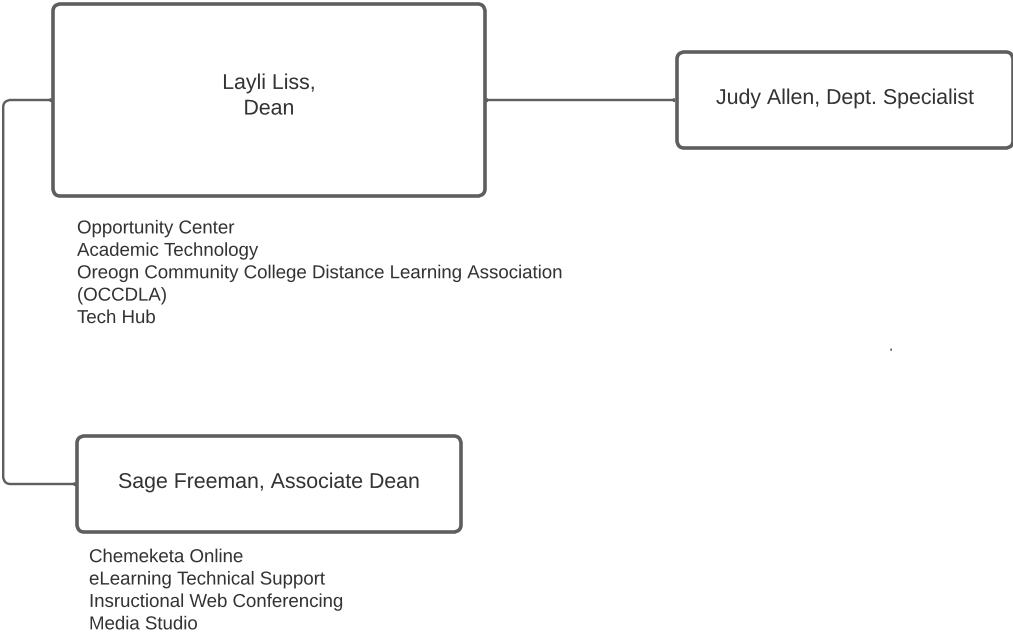
GENERAL EDUCATION & TRANSFER STUDIES



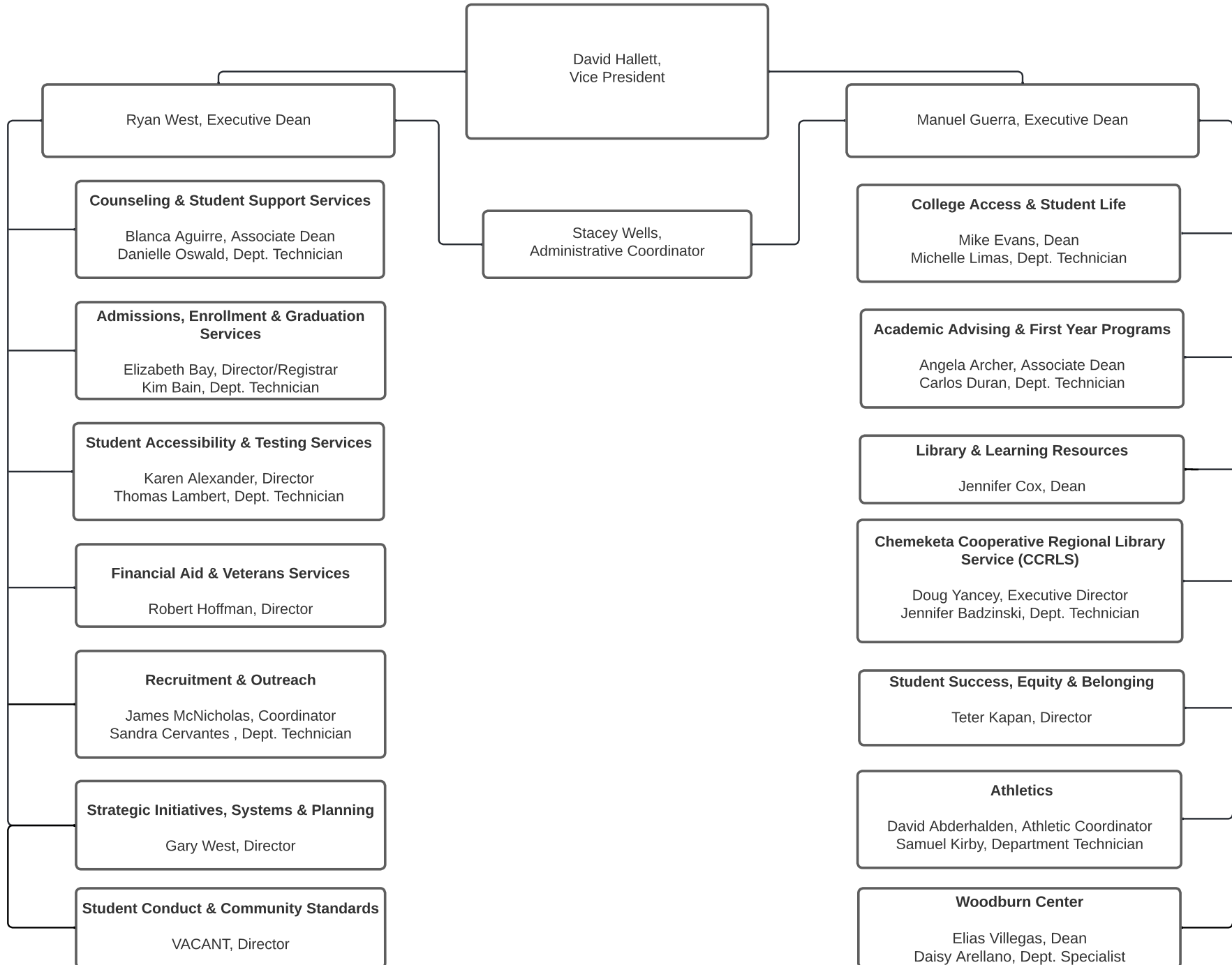
BUSINESS PROGRAMMING AND EARLY CHILDHOOD EDUCATION



CENTER FOR ACADEMIC INNOVATION

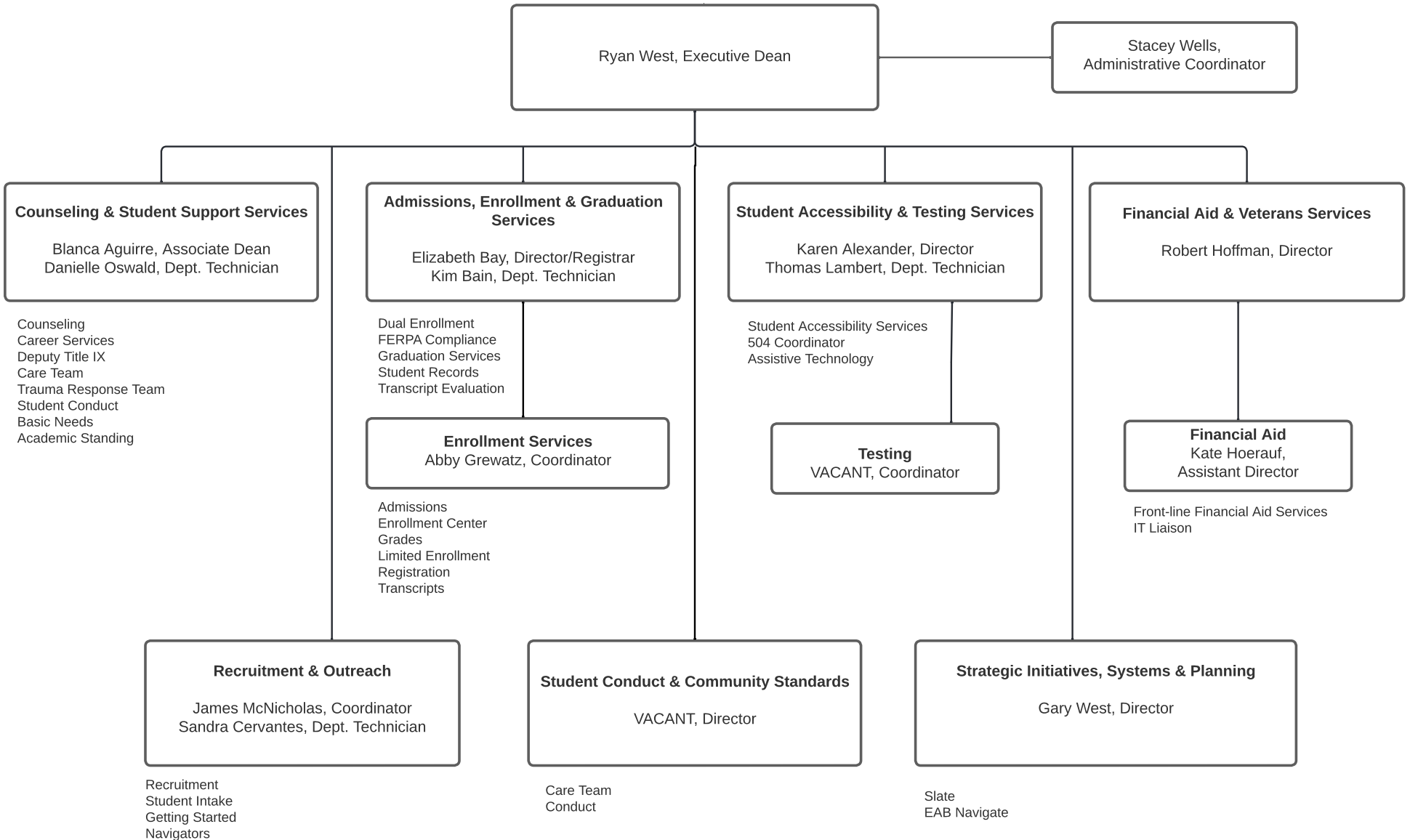


STUDENT AFFAIRS*

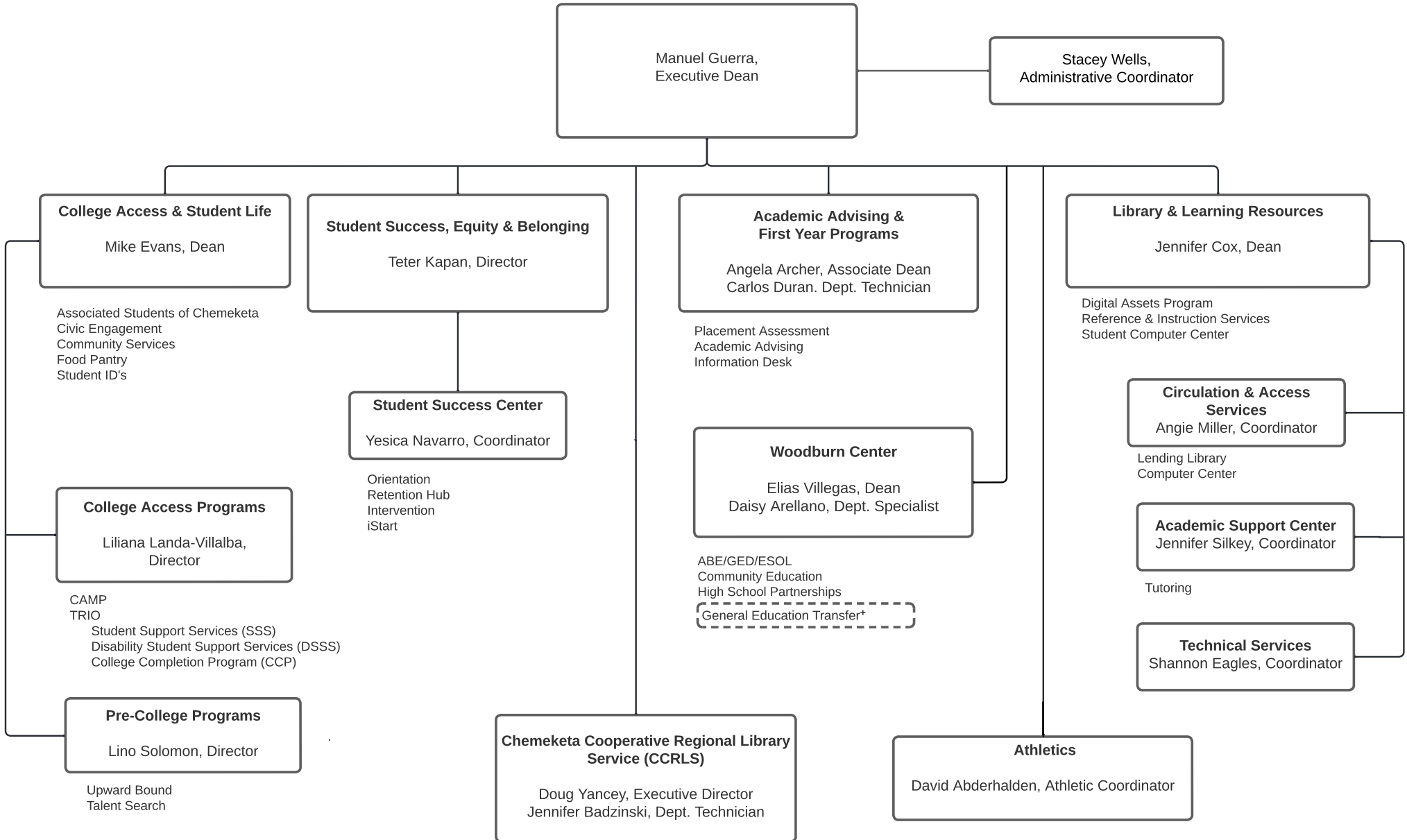


*more detailed charts follow

STUDENT AFFAIRS



STUDENT AFFAIRS



* works directly with General Education & Transfer Studies